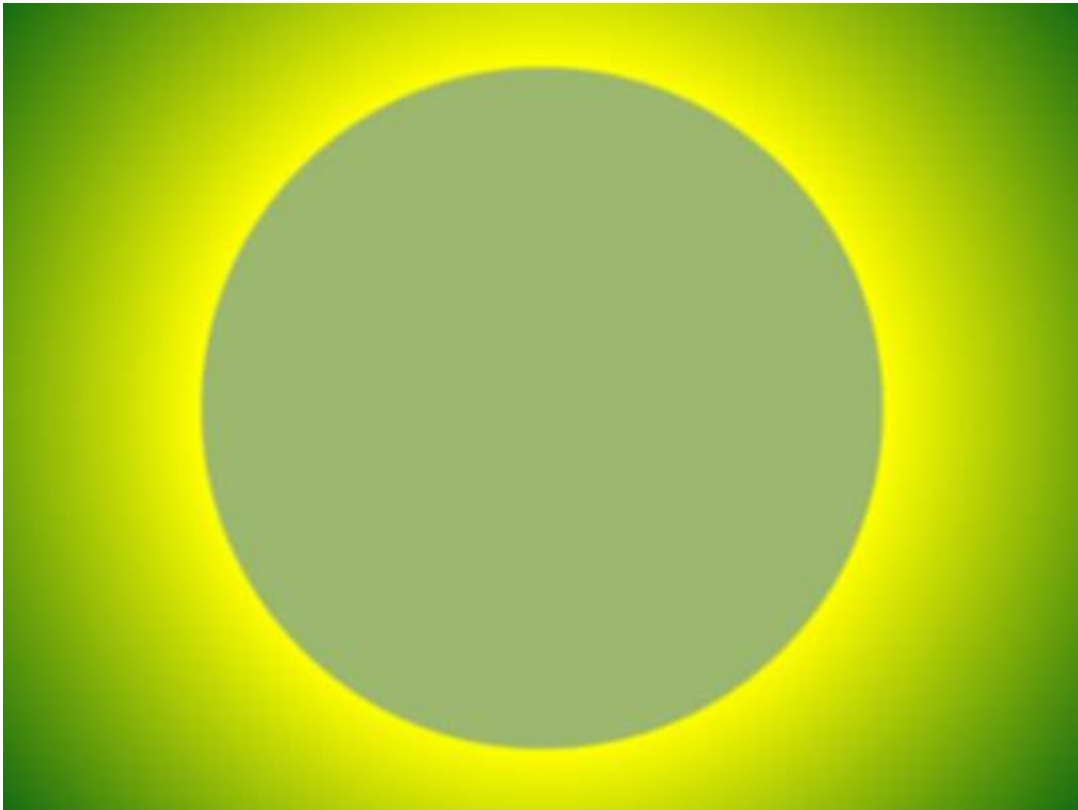


# **Environmental Sunrise**

“Sherborne Goes Green”



## **Conference Report**

**26<sup>th</sup> February 2009**

# Environmental Sunrise Conference Report

---

## Summary

The Environmental Sunrise Conference was the first Environmental conference, organised by the Sherborne Area Partnership (SAP) and it took place in Sherborne on 26<sup>th</sup> February 2009. There were 90 delegates and presenters who addressed environmental issues on abroad basis.

The Sherborne Environment forum was set up in 2008 under the auspices of SAP, with the objectives to;

- provide a vehicle to share views on environmental issues
- collate and return comments on environmental legislation affecting local people
- provide a means to stimulate and support groups of people in Sherborne and District to improve and enhance their environment
- to work on environmental projects in partnership with Sherborne in Bloom

The Forum's membership includes local people of all ages as well as representatives from the educational, voluntary and commercial sectors. The conference represented all sectors as well as people from the town and country areas.

It was recognised that an effective way of identifying issues and kick starting action would be to hold a public debate on them. The day long programme involved adults and student participants taking part in presentations, panel discussions and working groups. The presenters included key speakers from Dorset Wildlife Trust, Dorchester Transition town, Dorset County Council, Viridor Waste Recycling, Dorset Squared and the Fairtrade Foundation.

The results from this will be realised over time but some clear achievements included the formation of a core group for Transition Town Sherborne, revitalising the Sherborne Fairtrade group and the creation a list of people who agreed to take on responsibilities for defined actions to improve the environment in the Sherborne Area.

This report contains key messages from the presentations, topics discussed and the outcomes of the afternoon workshop sessions.

The issues will be worked up and discussed at future meetings of the Environment Forum, commencing with the next meeting at 18:00 on Thursday 23<sup>rd</sup> April, in the Manor House, Newland, Sherborne.

## Table of Contents

Summary.....	2
Conclusions.....	4
Action Plan.....	4
Participation.....	5
Presentations.....	5
Opening:.....	5
Keynote address:.....	5
Transition Towns.....	7
Tackling climate change in Dorset – a strategic overview.....	8
Panel Question Session.....	10
Local Presentations.....	10
Composting.....	10
Chalk and Cheese.....	12
Fairtrade.....	14
Working Session Reports.....	15
Energy.....	15
Transport.....	15
Local Food.....	16
Waste Management and Reduction.....	16
Waste Recycling.....	17
Composting.....	17
Fairtrade.....	18
Transition Town.....	18
Appendix 1: Programme.....	19

## Conclusions

The event was well attended by a capacity 90 adults and students who actively participated in the day.

There was a waiting list of participants and some had to be turned away at the door.

Awareness was raised on many issues and a lot of exchange of views and ideas was achieved during the day.

A high quality of presentations was achieved from external speakers including from: Dorset Wildlife Trust, Dorchester Transition town, Dorset County Council, Viridor Waste Recycling, Dorset Squared and the Fairtrade Foundation, see presentation summaries.

The results from this conference will be realised over time, but some clear and positive outcomes were achieved.

A core group has now been formed for Transition Town Sherborne

The Sherborne Fairtrade group was well supported, a new contact person has been selected, but more support is needed to get an active group going.

Impetus has been created in the green waste recycling and composting activities that are expected to be better supported and more actively promoted in future.

A list of people has been identified by name who will take on some responsibilities for defined actions to improve environmental aspects in the area. (see the working session reports)

## Action Plan

	Description	Action Party
1	Compile conference report and distribute to participants, Environmental forum and via SAP web site	Kevin Waterfall
2	Review the specific outcomes of discussions to prioritise and provide detailed support and focus throughout 2009	Kevin Waterfall
3	Each discussion group and action party to take the initial actions that they signed up for in the discussion groups section of this report	Moira Rigby, Hannah Solloway, Mary Brodie, Sheila Dawsey, Monique Hustinx, Cllr. Jane Smith, Rob Bygrave, Cllr. Malcolm Boustead, Cllr. Dru Gurzynski; Richard Calvert; Mevyn Smith, Cllr. Susan Green, Margaret Naine, Steven Moffat, Ed Fricker; Tom Whitlock, Georgie Dimond, Hannah Dawe, Helen Freeman, Bongani Wilson, Jo Lowndes, Luke Metcalf, Jenny Devitt, Aine Moriarty
4	Invite all groups and action parties to provide a status of their activities at the 23 <sup>rd</sup> April meeting of the Environment Forum	Kevin Waterfall

## Participation

The event was held at the Conference Centre of the Gryphon School, Bristol Road, Sherborne, Dorset. The venue suited the conference well and the school staff and caterers provide excellent support and service for the conference.

Attendees came from a range of different organisations and individuals representing a broad cross section of interest groups, local government, schools, clubs, societies and the commercial sector in Sherborne, West Dorset and South Somerset. Some 90 people participated in the conference.

Display stands were provided and gave information on behalf of:

Sherborne Transport Group, Sherborne Wind Energy Project, Sherborne and District Gardeners Assn., Friends of the Quarr nature reserve, Sherborne in Bloom, Transition Sherborne, Dorset Wildlife Trust, Dorset Agenda 21, West Dorset Climate Change, Fairtrade and Arts Link.

## Presentations

The following is a summary of key points from each of the presentations.

### ***Opening:*** Dominic Elliott, Mayor of Sherborne

Living in such a wonderful part of the country with a superb natural and built environment we feel a need to preserve what we have for the pleasure of our children and their children after them. As such we are conscious of the global impacts that also affect our lives here and we need to play our part in controlling our impact on the environment, whilst making a sustainable future.

I am pleased to see that our local organisations have been well represented in the displays in the hall for you to understand and participate in local activities, like the over 50's composting programme, the Friends of the Quarr nature reserve and our embryonic Transition Town group.

Having this conference in the Gryphon School is a reflection of the commitment of our schools to environmental education and I am pleased to see so many schools involved in the Eco-Schools programme and to have some of their students and representatives with us today.

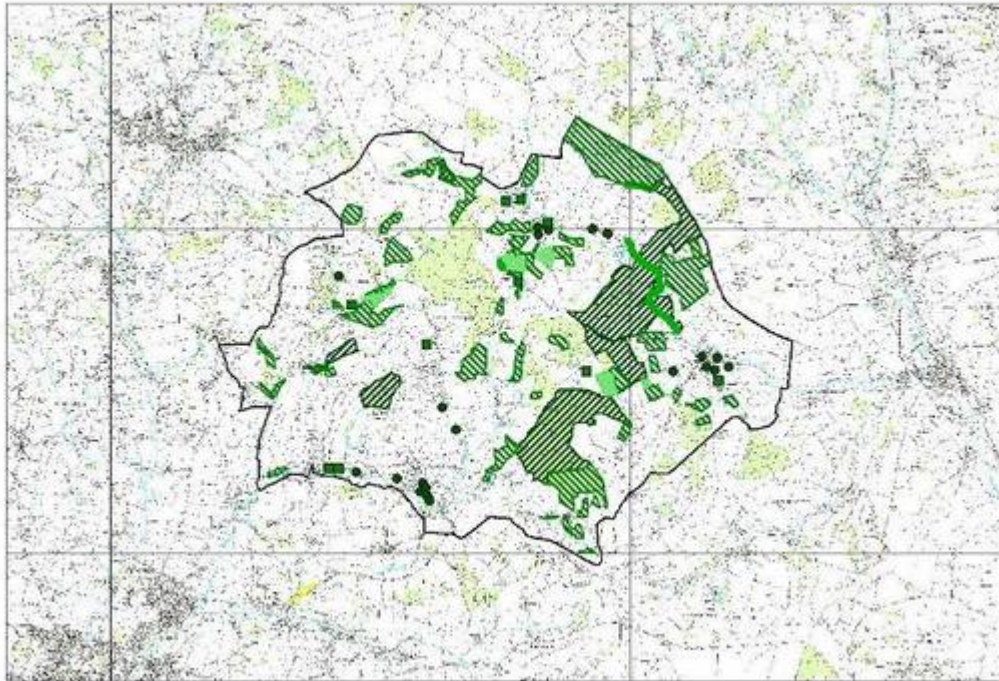
### ***Keynote address: Environmental Issues Global to Local*** - Simon Cripps, Chief Executive of Dorset Wildlife Trust

The presentation set environmental work in and around Sherborne and Dorset within a national or international context. It showed some of the challenges and opportunities in environmental management at whatever scale. Also it indicated the thinking and future work of the Dorset Wildlife Trust (DWT). It did this in three themes:

Living Landscapes Projects vital, but, to maintain the health of our environment, to reverse a trend of increasing degradation, to ensure man lives in harmony with nature and to provide resilience in the face of climate change, we need to think at the landscape scale. DWT is expanding its local projects in this aspect, to keep the environment and work in harmony with people.

A series of Living Landscapes, linked together across the length and breadth of the UK are what is needed. These link wildlife corridors.

## ***Living Landscapes***



### **Kingcombe + reserve + verges + priority habitats + recreated + members**

Regarding the regional Spatial Strategy and housing

- New housing is not necessarily damaging for wildlife if planned well, but:
  - wildlife sites might be proposed for development
  - water abstraction for homes can reduce river water levels
  - run-off from hard surfacing increases flooding problems and even treated wastewater can pollute
  - more cars on the road means more road-building proposals
  - people need green spaces in towns and countryside
- Need to consider planning in a living landscape context

Engaging Companies

- Support the good to out-compete the bad
- Use the power of the market and consumers
- We believe that local food is vital for the long-term survival of wildlife and local communities alike, with carbon reduction benefits.
- Grazing in particular is why chalk grassland, heathland and lowland hay meadows exist. We need to support conservation grazing or risk losing these habitats.
- Direct from Dorset is a local accreditation mark which guarantees local provenance.
- We are currently seeking to influence Direct from Dorset by promoting a 'Conservation Grade' as part of the scheme.

## Engaging People

The future of the health and beauty of our county lies in engaging people with their natural environment – if necessary on their terms. Gone are the days when we can just lock away important bits of the world, but conservation charities need to work on a global and local scale.

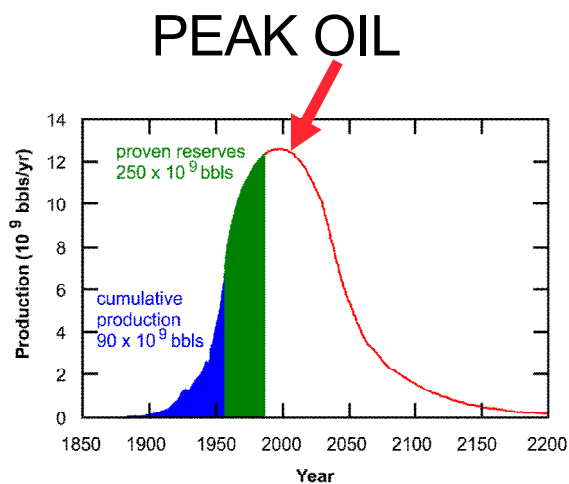
Engaging People provides useful leads into climate and sustainability & visa versa



**DWT Reserve at Fontmell Down**

## ***Transition Towns – Mike Jones, Chairman Transition Dorchester***

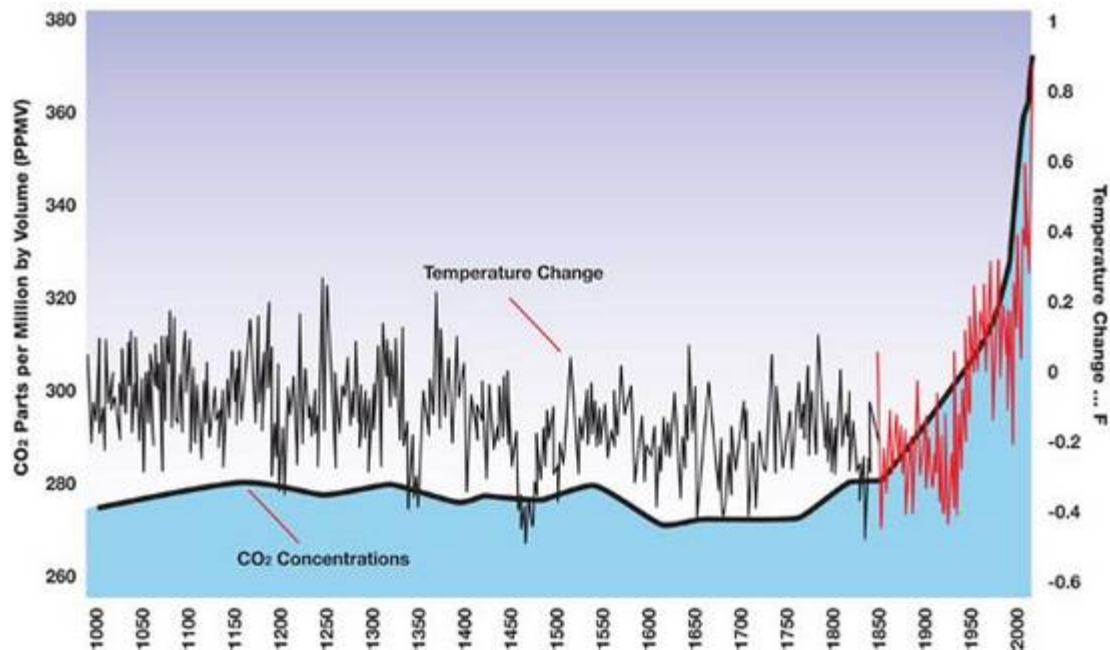
Mike talked about the twin challenges facing the world to Manage Peak Oil production as well as Managing Climate Change and how people in Dorchester are tackling this. The approach is to empower people to get involved.



**Hubberts Curve**

We used energy & creativity to get to where we are, we need the same to get back to a low carbon environment.

Early action collectively is needed to create the impetus, create change and implement ideas. Working together with all interested parties can create a more sustainable future.



**Graph shows rise in global temperature is related to the rise in carbon dioxide and other greenhouse gases in the atmosphere.**

As communities we need to have;

- local resilience
- carbon reduction
- consume closer to home
- produce closer to home
- play closer to home
- decentralised energy infrastructure
- the Great Reskilling
- localised food
- energy descent plan

Some of the Specific things that are being done in Dorchester are:

- Casterbridge Food co-op (organic food, wholefood and other specialist items).
- Monthly 'Green Drinks'.
- Involved with Dorchester's first Car Club.
- Transition book and DVD library.
- Thomas Hardy School project/competition.
- SCA Public Meeting.
- Film nights.

A key emphasis is localisation to reduce the use of hydrocarbons and stimulate the local economy.

***Tackling climate change in Dorset – a strategic overview.*** Kate Hall, DCC Sustainable Development Manager; Chairperson, Dorset Energy Group

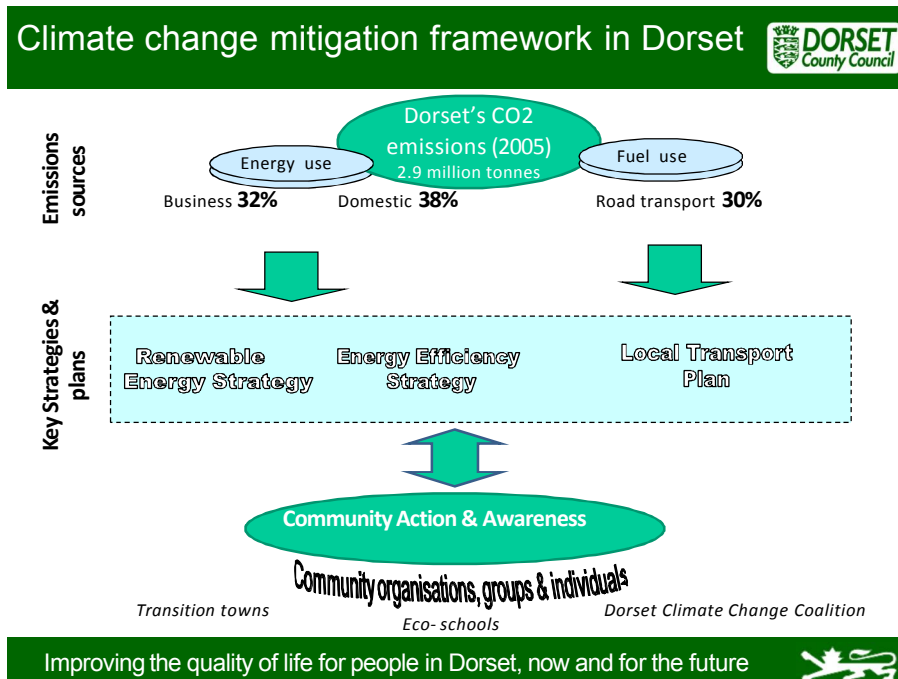
The presentation focussed on Understanding climate change and Tackling climate change through:

**Mitigation** – using Renewable energy, Energy efficiency, Sustainable transport






**Adaptation** – via a County wide approach

It discussed climate Change causation and summarised this via the statement from 2007 by the Intergovernmental Panel on Climate Change (IPCC) statement “that most of the observed increase in global average temperature since the mid 20<sup>th</sup> century is very likely due to increases in manmade greenhouse gas concentrations”.

UK climate change effects were illustrated and the climate Change mitigation framework in Dorset was explained, this relates to where the Greenhouse gases come from and how they might be addressed by groups of people.



The Dorset Renewable Energy (RE) Strategy was summarised from which the following target and approaches will be taken., though achievement of targets is unlikely at the current rate of progress.

<p>➤ <b>Target : 64 – 84 MW RE electricity by 2010</b></p> <p><b>Five year action plan,</b></p> <p>Addressing:</p> <ul style="list-style-type: none"> <li>• Planning,</li> <li>• Biomass energy &amp; energy from waste</li> <li>• RE in buildings</li> <li>• Raising awareness</li> <li>• Community renewables</li> </ul>	<p><b>Community renewable exemplars</b> </p> <ul style="list-style-type: none"> <li>• 3 year project – March 2009</li> <li>• RE technologies on public &amp; community buildings.</li> <li>• Led by County Council with partners</li> <li>• 50 installed</li> <li>• Project to continue with permanent post</li> </ul>    <p>Improving the quality of life for people in Dorset, now and for the future </p>
--	---

Examples were provided of Community Renewable systems installed, some in the Sherborne area are part of 50 so far installed in Dorset.

The Dorset Energy Efficiency Strategy was then explained, which was published in Feb 2009 has the following targets

- 30 % reduction in CO<sub>2</sub> by 2020
- Seek to eliminate fuel poverty by 2016

Then Dorset and SE Dorset Transport Plans were addressed which:

- Sets out strategy 2006 -11
- Incorporating a range of actions to reduce CO<sub>2</sub> e.g.
  - School & workplace travel plans
  - Carsharing & car clubs
  - Promoting cycling & walking
  - Eco driving training

With opportunity to strengthen actions in 2012 plans

The Dorset Climate Change Adaptation Strategy will be developed within 2 years.

### ***Panel Question Session***

The first 3 speakers then took part in a panel session to address and respond to audience questions.

The questions were wide ranging and included the following topics:

Economic situation and encouragement to sustainable living, Housing standards to include Renewable Energy, RE on listed properties, Rented property to be energy efficient, Encouragement to local businesses, Engagement of the public in the debate and actions to reduce energy wastage. Biodiversity and roadside verges, Recycled paper usage in conference preparation.

A lively debate engaged the audience and discussion between the panel and audience groups.

### ***Local Presentations***

Each of the following organisations were present with display stands to show what they are doing in the environmental area. Sherborne Transport Group, Sherborne Wind Energy Project, Sherborne and District Gardeners Assn., Friends of the Quarr nature reserve, Sherborne in Bloom, Transition Sherborne, Dorset Wildlife Trust, Dorset Agenda 21, West Dorset Climate Change, Fairtrade and Arts Link.

This gave a valuable illustration to people of what they could do and how they could get involved in Sherborne and district.

### ***Composting – Richard Griffith, Sales Manager Viridor Waste (Somerset) Ltd***

The talk focussed on the rationale for composting, the processing techniques and how effective the processes are for commercial composting of green and food wastes. This is the natural process for returning grown nutrients to the earth. Allowing improved yields from agriculture & horticulture, whilst cutting back on artificial fertilisers. A wide variety of feedstock's are taken, including a proportion of paper and cardboard.

## Incoming feedstock

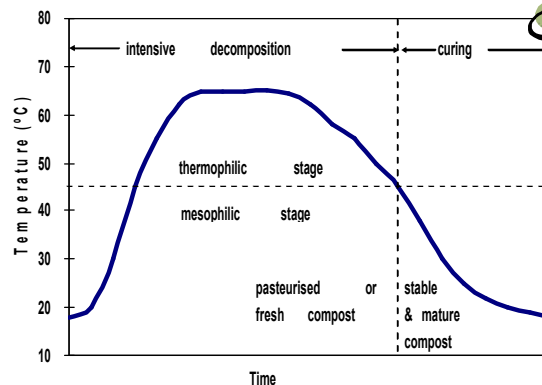


3.6 million tonnes organic wastes were composted in the UK during 2006/07, of which 1 million tonnes compost supplied to agriculture. There are two primary processing methods:

- Green waste – open windrow or aerated static piles
- Green/food waste – enclosed/in-vessel

The key to successful compost is getting materials well mixed and creating the right temperature conditions to kill bacteria. This is typically achieved by reaching 60°C for two periods during the composting process.

## Temperature changes during composting



Some of the key benefits to using compost are:

- Good source of readily available nutrients, especially phosphorus and potassium (75% / 90% plant availability in year 1)
- Excellent water infiltration & holding capacity
- Good source of essential trace elements

- Enhances root development in most plants, thus enabling greater uptake of nutrients / strong plant tissue development
- High cationic exchange capacity in the humus– locks up essential nutrients at root zone, rather than being washed away
- Supplies major plant nutrients (e.g. N) & trace elements on slow-release basis, enabling a reduction in reliance on artificial fertilisers
- Ready and ample source of micro-organisms – living product, assisting with natural plant disease suppression. It contains nitrogen-fixing bacteria.

Excellent illustrations of the usage of compost were given and it was clearly shown how compost application to agricultural, horticultural and domestic land produces superior growing conditions and return as compared to only using artificial fertilisers. Compost has been the basis of many prizewinning entries to flower shows and exhibitions. In 2008 Viridor also donated 30 tonnes of compost to the Sherborne “adopt a plot” bee project.

### Taunton in Bloom 2008



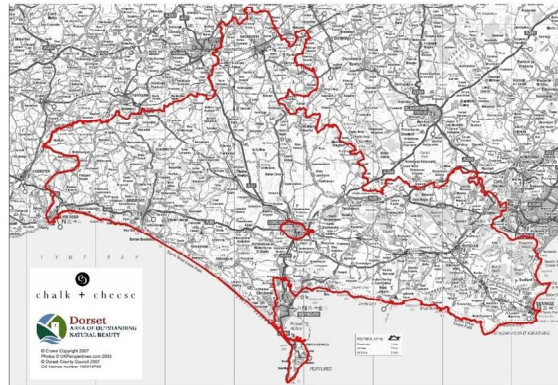
### ***Chalk and Cheese*** – Sarah Watson of Dorset Squared

#### **Chalk and Cheese – Local Action for Rural Communities**

The substance of this presentation was around the £3.1 million that is now available for funding of projects of an environmental, social or sustainable development nature. This is funded by the European Local Action Programme. Chalk and Cheese has recently secured £3.1million of funding to support projects in West Dorset, Purbeck, Weymouth and Portland, excluding the main urban areas of Weymouth and Dorchester, as illustrated below

# Local Action in Dorset: Chalk and Cheese

---



This funding will be spent on projects which meet the aims of Chalk and Cheese, which are to:  
***“Support existing and encourage new sustainable land and marine based enterprises which rely on, and contribute to, the quality and understanding of our unique and beautiful environment.”***

This will be achieved by:

1. **Developing the entrepreneurship and skills required to utilise the economic opportunities created through the development of an enhanced environment.**

This could include training and skills; activities based on traditional skills and knowledge; uptake of sustainability skills and knowledge relating to climate change; and collaborative working.

2. **Creating opportunities for land and marine based enterprises to improve their economic performance through innovative activity that adds value to and enhances our unique environment, and so provides an economic basis for the long term sustainable management of our countryside and coast.**

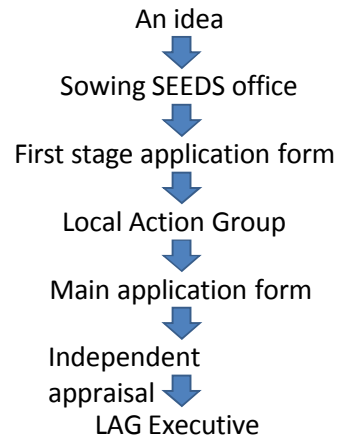
This could include supporting economic land management that adds value to the environment; supporting local products; and developing sustainable year-round tourism and recreation – all based on the sustainable management and enjoyment of our unique coast and countryside.

3. **Supporting enterprises and communities to work in partnership to play an active role in developing and celebrating Dorset’s environment based economy and culture and accessing the opportunities it provides by.**

This could include supporting celebration of local distinctiveness; developing access and understanding of the coast and countryside and its associated products; and improving the environmental sustainability of communities in the area.

## The keys to success

- Robust and inclusive decision making process
- Strategic long term beneficial impact
- Clear focus on what we want to achieve
- A range of high quality projects



## The Local Action Group

All of the projects applying for funding will be assessed by the Local Action Group (LAG). The LAG is an open forum that anyone who lives or works in the area can join, come along to meetings, enjoy tea and cake, meet the project applicants, and vote on the applications being discussed. Every members vote counts equally so by joining you have a real say in the projects that are approved and receive support. So we need you to make the process work and to make sure the best projects receive support, ensuring real long term benefit to you and your communities

## **Fairtrade** – Elisabeth Orrell, Fairtrade Portland and Weymouth

The presentation gave a very clear and focussed way in which towns become Fairtrade towns and Sherborne has already passed a resolution to this effect through the town council. The challenge is to get a core group of people together who are willing to make this happen.

*The Fairtrade Mark means:-*

- ✓ a guaranteed fair price to the producers
- ✓ a social premium is paid to be used for the benefit of the whole community
- ✓ fair working conditions
- ✓ a long-term commitment to the producers
- ✓ a commitment to raise awareness of local issues with governments.

To become a Fairtrade town the town needs to achieve the following 5 goals:

### Goals:

- 1) Council passes a resolution supporting Fairtrade, and agrees to serve Fairtrade tea and coffee at its meetings and in its offices and canteens.
- 2) A range of (at least two) Fairtrade products are readily available in the area's shops and local cafes/catering establishments.
- 3) Fairtrade products are used by an appropriate number of local work places and community organisations.
- 4) Attract media coverage and popular support for the campaign.
- 5) A local steering group is convened to ensure progress and continued commitment to the campaign.



## **Working Session Reports**

### ***Energy***

#### **The Issue:**

Political will (but they think short term; we have to push them)

#### **What to do about it:**

Raise consciousness and understanding

More events like Environmental Sunrise

#### **Action Parties:**

You = tell someone else when you go home

### ***Transport***

#### **The Issue:**

Still increasing traffic on the roads

Difficulty of public transport in rural areas; especially for youngsters

Voluntary hospital drivers may be ending March (may have been extended). Hospital centralisations

#### **What to do about it:**

More awareness of Car share schemes

Invest money and energy into community transport. Local schemes to adapt to needs

Primary focus on essential services e.g. hospital cars

#### **Action Parties:**

Sherborne Transport Action Group (STAG)

Volunteers

Health service / Government

Local Grant Schemes

Car clubs/ car share websites/ pool cars

New building developments

## ***Local Food***

### **The Issue:**

1. Lack of locally grown vegetables for sale in local shops, farmers markets, etc. Also lack of local vegetables for local schools.
2. No allotment plots available anywhere in West Dorset
3. Few orchards
4. Food labelling
5. Lack of cookery skills

### **What to do about it:**

1. Community supported horticultural project e.g. as Glastonbury
2. Get allotments into Parish Plans. Push Parish Councils to investigate demand. Use creative thinking – cultivating “waste land”. Guerilla gardening (veg) . Push for a change in byelaws to allow allotment holders to sell surplus.
3. Community orchards/ fruit trees on allotments. – not affected by occasional flooding – community fruit press
4. Lack of resources for support for local food products
5. Promotion of Direct From Dorset directory. Support for existing local schemes, e.g. Thornford School gardening project
6. Recipe swaps, building confidence in cooking

### **Action Parties:**

1. Chalk and Cheese funding – Moira Rigby  
Community buy in – Hannah Solloway  
Sympathetic landowners  
Glastonbury Group
2. Help and advice from other community orchards e.g. Symondsburry

## ***Waste Management and Reduction***

### **The Issue:**

Litter on verges, excess packaging, batteries, plastic bags, light pollution, unnecessary journeys, noise pollution, charity shops, bins for different types of litter, energy waste

### **What to do about it:**

Organised litter picking teams  
Education all ages,  
Reduce/ reuse packaging – refilling  
More recyclable/ biodegradable packaging  
Pay for plastic bags – use non plastic  
Rewards for not using plastic  
Intelligent /automatic lighting, downward pointing lights  
Research into lighting and security  
Better public transport and cycle routes  
Promoting cycling and walking  
Limit motorbike and car exhaust noise  
Segregated litter bins  
More common sense  
Recycling heat from commercial fridges

### **Action Parties:**

Litter:- Mary Brodie, Sheila Dawsey, Monique Hustinx

Local communities – Jane Smith  
Supermarkets: - Rob Bygrave

## ***Waste Recycling***

### **The Issue:**

The amount of materials that are not collected for recycling. Includes:  
green garden waste, (cooked) food waste, plastics items (excluding plastic bottles), paper  
hand towels, electrical goods

### **What to do about it:**

Garden waste: Ask WDDC to separate green waste bags. Encourage self help

Food waste: Separate and compost

Plastic items: Encourage modern and closer separation facilities (goes to Lincolnshire)

Paper hand towels: Find alternatives, compost, incinerate

Electrical goods: Encourage use of Dorset reclaim and other similar companies

### **Action Parties:**

Self help groups to create more public information

WDDC to take a more lateral thinking approach

## ***Composting***

### **The Issue:**

Collected garden waste is charged for, but goes to landfill (Public are not aware of this)

Garden waste that is taken to the dump is composted in East Dorset

Do the public know how to home compost? Home composting is the most sustainable  
(compost miles) Home composting is a great way of highlighting sustainable living issues

Bulk composting, e.g. Viridor, produces better quality compost than at home

Wormeries,

Small scale biodigesters

Lack of awareness from the general public

Food waste 30 % of average home waste

Biggest producer of Methane (Greenhouse gas)

Cost of dealing with this

Commercial production of food waste

### **What to do about it:**

Training & Awareness. Tell the public the facts about waste and the problems from it

We need to lobby WDDC about the issues and get them to talk to composters, like Viridor.

The waste collection vehicles are a problem as they cannot take green waste separately.

Support over 50's campaign

Home composting training leaflet

Subsidised compost bins

Training re not washing food

Changing food buying habits. Promote little and often buying from local shops, not huge  
supermarket shopping sessions

Assistance and guidance from councils for commercial producers

### **Action Parties:**

Council – Malcolm Boustead & Dru Gurznsky with WDDC

Private contractors used in Somerset (ECT)

Lobby WDDC re cross border transport of waste from Sherborne to e.g. Castle Cary (Dimmer)

Support over 50's as a mechanism to put pressure on WDDC by awareness

PR [Quarr?] stories – Me! Get positive PR to do something

Chalk and Cheese Funding – Community / Commercial partnership

Chamber of trade, making awareness & cost saving by splitting waste

WDDC to provide guidance for business

All people here to spread the word

Richard Calvert check how outreach own influence

## ***Fairtrade***

### **The Issue:**

Lack of Steering Group Members, interest but no members

### **What to do about it:**

Join Transition Town Movement

Publicity for Fairtrade Fortnight

Contact schools, find interested people

Get mentioned on council website

Tap into churches

Find info from Fairtrade website

Establish and keep in contact with other Fairtrade groups

Contact trad craft for local contacts

### **Action Parties:**

Cllr Susan Green (01935 813467) will act as Fairtrade leader until another volunteer appears

Margaret Naine for advice ([mnaine@uwclub.net](mailto:mnaine@uwclub.net))

School Group: Steven Moffat, Ed Fricker, Tom Whitlock, Georgie Dimond, Hannah Dawe

## ***Transition Town***

### **The Issue:**

How do we move forward and really get started in Sherborne?

### **What to do about it:**

Raise awareness – show films e.g. End of Suburbia

Find out what people in Sherborne want – Hold public meetings, use open space

Go to groups in the area, make presentations and talk with them e.g. business community

Apply for finance e.g. Chalk and Cheese

Find a venue for meeting

Establish e-mail list

Hold a competition for primary schools in the area

Design a logo/ banner

Set up a website/ info

Establish a core group, hold group events, monthly?

Run a great unleashing

### **Action Parties: Steering Group**

Helen Freeman, Bongani Wilson, Jo Lowndnes ??, Luke Metcalf, Jenny Devitt, Aine Moriarty

## Appendix 1: Programme

09:30	Welcome and opening	<b>Dominic Elliot</b> - Mayor of Sherborne Programme explained Kevin Waterfall
09:40	Environmental Issues - Global to Local	<b>Simon Cripps</b> (DWT Chief Executive)
10:05	Transition Town - Drive and Development	<b>Mike Jones</b> (TT Dorchester)
10:25	Tackling Climate Change in Dorset - a strategic overview	<b>Kate Hall</b> (DCC Sustainable Development)
10:45	<b>Break</b>	
11:05	Speakers Panel Session – audience discussion	<b>Simon, Mike, Kate, Kevin</b>
11:40	Local groups to introduce their stalls	Local exhibiting groups
12:05	Brainstorming discussion table topics	
12:15	<b>Lunch</b>	
13:00	Start Afternoon Session	Introduction
13.10	Composting presentation	<b>Richard Griffith</b> Viridor
13:25	Chalk and Cheese Presentation - funding for local projects	<b>Sarah Watson</b> (Dorset Squared)
13:45	Fairtrade Presentation – How to become a Fairtrade Town	<b>Elisabeth Orrell</b> (Fairtrade)
14:05	Introduce Table sessions	Issue? Solution? Who?
14:15	<b>Break</b>	
14:35	Issues Discussion at tables and presentation of findings	Participants and speakers plus guests 8 topics
15:35	Summary	
15:45	Closing	